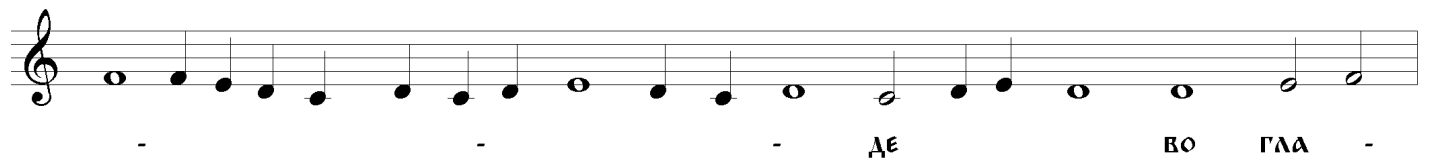
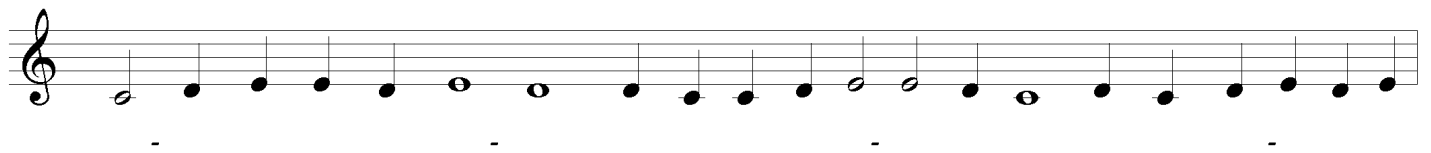
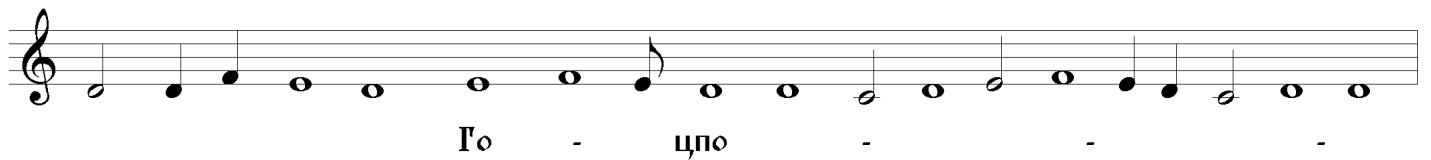
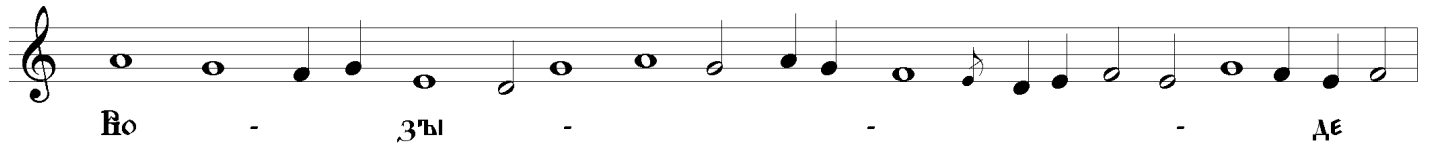


Вознесение Христова

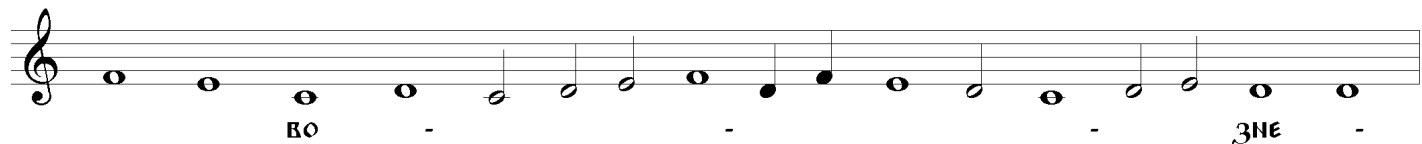
(путевое)

На *СТИХОВНЕ* - СЛАВА И НЪИНЕ, ГЛАС 3





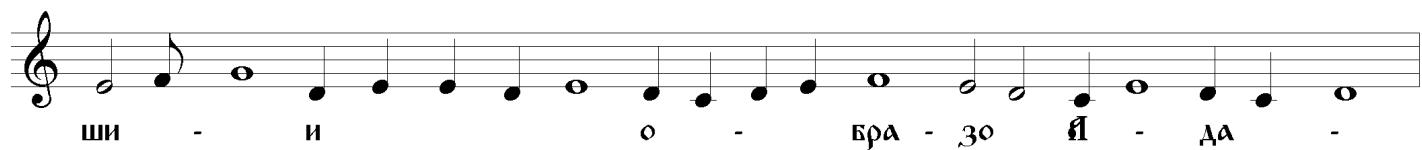
СЕ ТРОУ - - БЕ - НЕ



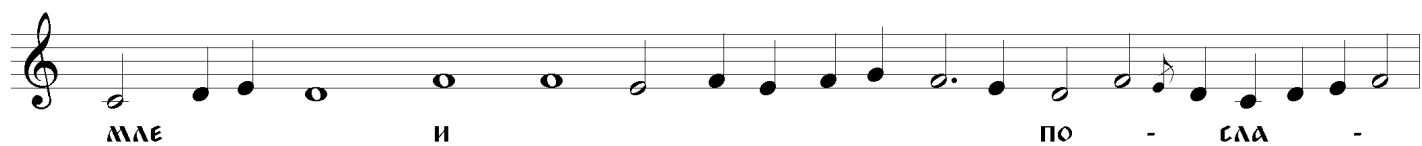
ВО - - ЗНЕ -



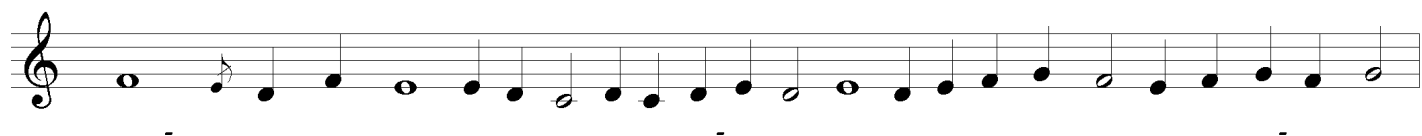
- - СТИ ПА - ДО -



ШИ - И О - БРА - ЗО Ы - ДА -



МЛЕ И ПО - СЛА -



- - -

ТИ

ДОУ

ХЪ ВЪ ТЕ ШИ ТЕ ЛЬ

О СВІА ТИ

ТИ ДОУ ША НА ША.